

Understand Posture. Optimize Defenses.

It's time to change how you work!

Ensure your Security Operations teams have the awareness they need to design and optimize effective critical security controls, and continuously evolve your security posture.

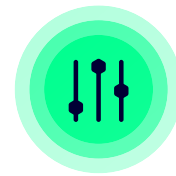
XM Cyber Security Controls Monitoring delivers a comprehensive cybersecurity awareness and compliance management platform that acts as a single source of truth for the security posture of your entire hybrid infrastructure.

Continuously enhancing your security posture through the unification of security intelligence, that evaluates the effectiveness of your security stack, and optimizes your defenses against persistent threats.

This unique approach gives you the context you need to make faster and more confident decisions about your security posture. Understand what critical security controls you have in place and how they are helping you align to best practices and regulatory compliance frameworks.

Now you can achieve continuous compliance across your dynamic Infrastructure, helping you reduce operational overhead and more effectively align cybersecurity technology, people and processes to remediate misconfigurations and implement proactive critical security controls.

The platform enables you to minimize the attackers' ability to evade your security defences and increases your overall security posture.



XM SCM

Security Controls
Monitoring

Streamline Security Management

Break down your security silos and provide a consistent view of security controls across your entire environment.

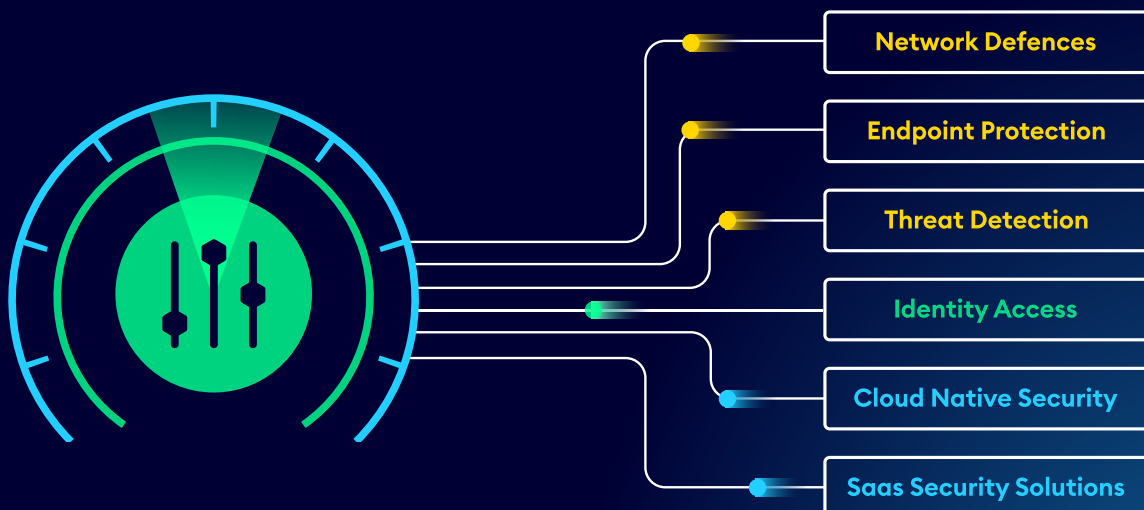
Evaluate Security Posture

Analyze security posture and identify gaps to better understand the effectiveness of your security defenses, to understand what needs fixing and why.

Optimize Critical Security Controls

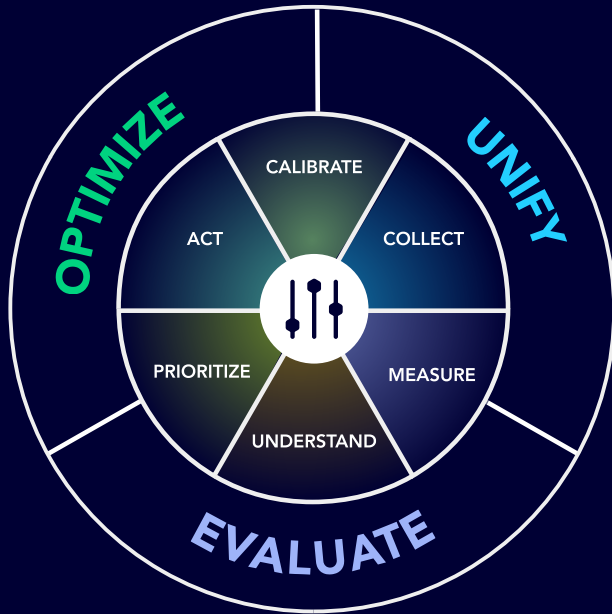
Use industry and vendor best practices, along with XM Cyber recommendations to build your defenses higher without impacting business performance.

Continuously Enhancing Your Security Posture





XM SCM Technology Flow



- **CALIBRATE** your desired security posture
- **COLLECT** intelligence across your security stack
- **MEASURE** efficacy of your security controls
- **UNDERSTAND** security gaps and weaknesses
- **PRIORITIZE** how to maximize your defenses
- **ACT** on findings to optimize security posture

Proactive Infrastructure Hardening

Ensure the integrity of the Control and Management planes of your security infrastructure by performing crucial hardening steps to align the configuration of your diverse security stack to industry and vendor best practices. Remove misconfigurations that represent the low-hanging fruit for adversaries to exploit.

Configuration Drift Management

Timely detection of configuration drift is crucial for preserving the integrity of security defenses. With limited time to spend on each security tool, configurations often fall out of line with your desired baseline – SCM ensures critical security controls aren't weakened due to neglect or operator error.

Security Gap Analysis

Continuously evaluate your security posture and the effectiveness of your security investments. Identify overlaps in policies and controls, while also highlighting fragmentation and allowing you to address gaps that may have gone unnoticed by your security operations teams. Maximize your existing security investments.

Security Configuration Optimization

Analyze and report on critical security controls (CSCs), to aid the design and optimization of security policies, protocols, rules, access permissions, and detection capabilities to bolster security defenses, enhance your security posture, and reduce the likelihood of a breach without slowing down the business.

Divergence & Anomaly Detection

Expect the unexpected by monitoring and alerting on divergence in the behavior or performance of your security tools. To ensure they remain within desired thresholds and risk tolerance boundaries. Zero-in on events that may allude to adversaries attempting to bypass defenses and evade detection.

Audit and Compliance Readiness

Unify configuration state and security intelligence across your entire security stack, with detailed insights and granular findings that accelerate audit readiness. Out-of-the-box mappings of security controls to regulatory compliance frameworks makes it ease to communicate compliance adherence to stakeholders and auditors.